



# The Dell Primary School

## Prospectus 2024-25



All schools are not the same. It's a bit wordy but year after year, conversation after conversation you get to see that, surprise surprise, because no two children, adults, classes or teams of people are the same, every school is unique. Each has a different set of circumstances, aspirations, staff skills, pupil needs and circumstances, buildings, resources, etc etc. Each school has its own quite distinct culture and ethos as a result of both its constituent parts and also the agreed approach to doing what it does. To be clear, it's not about better and worse, it's not about league tables; it's about what a school stands for and what its culture looks and feels like.

So what is The Dell really like? What are our values? How have we shaped 'the way we are' and how will this bring about the very best in every child who comes through our doors every day?

We believe that every child is different and each has his or her own interests, strengths, understanding of the world and ambitions. We try to recognise and encourage each child to discover and be themselves and to find what they're really good at. National initiatives and curriculum frameworks change every few years; values and the core purpose of schools are pretty much cast in stone. Rightly, literacy and numeracy will always be at the core of any good school; without these

vital life skills, children will become disadvantaged adults and never have the chance to reach their potential. However we believe passionately that to thrive, humans need care, support, guidance, mentoring, role-modelling and a sense of 'wow' about the amazing world around them, near and far. It's a bit simplistic to say 'school should be fun' but we believe that talk of 'work' can feel a bit dull and negative for a five year old while 'learning' through activities that are exciting and engaging are the way to really accelerate children's academic, social, personal and emotional development and future life and work opportunities.

Our school is 'all about learning' but it's also all about leadership. Our successes as a school are down to the adults who work here and not one person.

We share leadership amongst some great people and the mixture of skill, experience, passion and opportunity means that the school runs like (an incredibly busy) well-oiled machine. All the people who work at The Dell are 'teachers' because they all see the part they play and the difference they make every day to the children by the time they leave us at the end of Year 6. Teamwork is a strong feature of The Dell and the camaraderie and peer support is palpable. It's full-on and fast-paced but we believe that happy,

driven staff create happy, driven learners.

I always say it's impossible to paint a true picture of the colour, breadth and day-to-day experience of the school using black words on white paper and because we really want to showcase all the achievements of our pupils and staff, we've developed our very interactive and colourful website [www.dell.monmouthshire.sch.uk](http://www.dell.monmouthshire.sch.uk) and various social media platforms like [www.twitter.com/thedellschool](http://www.twitter.com/thedellschool). Have a look, keep coming back for daily updates on the huge range of opportunities our children have and the successes they achieve.

While The Dell is the largest primary school in Monmouthshire, I sincerely believe that this brings only benefits to every pupil. Teachers know every child in their care very well and colleagues work exceptionally well sharing information across classes and with other schools as required and make sure that every child has every chance to be the best they can be.

Welcome to The Dell!

Steve King  
Headteacher



**Be kind**  
**Be your best**

**Independence**

**Love**

**Respect**

**Courage**

**Trust**

**Happiness**

**Politeness**

**Friendliness**





The Dell is a community primary school in Chepstow, Monmouthshire, South Wales. It serves the local area, where there is a degree of social and economic advantage. In July 2024 there were 405 pupils on roll between the ages of four and 11. 9% of pupils were entitled to free school meals, which is below the Monmouthshire average (14%) and the Welsh average (21%). The school had 15 Full Time Equivalent teaching staff. The school had 9% of pupils with additional learning needs, including a very few who have Individual Development Plans, which is also well below the Welsh average. The Dell is one of five primaries in the Chepstow cluster of schools and sends most of its pupils to neighbouring Chepstow School at the end of Year 6. 3% of children have English as an additional language. No pupils have Welsh as the language of the home. Average termly whole school attendance in 2023-24 was 94.6%.





### **Chepstow - Our Town**

The Dell is located on the cliff above the River Wye, and is probably the closest school in Wales to the English border. We share a boundary with Chepstow Castle, the oldest stone built castle in Britain and are two minutes walk from the town centre. Chepstow is a popular place to live, work and visit and has excellent transport links to Newport, Cardiff, Bristol and the national road network. The nearby racecourse hosts the annual Welsh Grand National and the town has a rich history including a bridge built by Isambard Kingdom Brunel.

### **Monmouthshire - Our County**

Our county has just under 100,000 residents and covers an area about 350 square miles. It's the 17<sup>th</sup> largest of 22 counties in Wales in terms of population but 7<sup>th</sup> in terms of size. There are more castles than any other county in the UK & when you throw in a coastline, rivers, a mountain or 2, bustling market towns & quiet rural villages, it's a fascinating place!



## Pupil Voice

(Taken from HT Working Lunches & Pupils Surveys)

- Preparing children for the future
- Making learning fun and interesting
- Teachers being kind to children and helping them to do their best
- A place where people are kind to each other
- Where everyone can be experts in maths and English and get good skills
- I'd like it where older children helped and looked after younger children
- Where people can reach their potential
- Learning indoors and not too much sitting down and listening
- Happy memories for when I grow up and look back to my childhood
- A school where we are all proud and help each other
- Where there's a balance of sport and things for people who aren't sporty



## Our Shared Vision

A caring, happy school where every child is highly and equally valued as an individual.

Where passionate staff support and do what's needed to help each child thrive and where active learning is engaging, relevant and takes place indoors, outdoors and in the local community.



**Be kind**  
**Be your best**

## Staff Voice

(Taken from INSET Activities)

- To prepare pupils for 'real life' and continue their learning (lifelong learning)
- For each child to reach their potential in a safe & secure environment
- To engender a love of learning for life
- To prepare children for their future through an exciting childhood
- Through a huge variety of experiences and opportunities we aspire to develop a passion for learning & the ability to learn
- To create independent learners who engage in varied areas of learning & creativity
- A place to feel safe to explore
- A school that has one aim: achievement (learning, hobbies, social skills & life)
- A school that equips children with curiosity, skills & understanding & that allows them to live enjoyable, fulfilled lives.

## Parent Voice

(Taken from Parent Forums)

- A school where children achieve the highest levels in reading, writing & maths
- Where every child is noticed and pushed to be amazing
- Where teachers like and enjoy working with each child not just favourites
- I think the school is already exactly what I always wanted for my children
- Where children learn fairness, respect and how to really care for others
- Where children can express their feelings without fear
- To systematically find out what each child is good at, celebrate it and to get even better at it.
- To keep children safe physically and emotionally.
- To prepare children for their future while helping them love being a kid!

## Governor Voice

(Taken from 'All About Learning' activity)

- Focussing on learning, always remembering what we're here for -A school which looks for its weaknesses and turns each into a strength
- Where children feel safe and happy and genuinely learn from mistakes
- A place where staff love working in and are therefore self-driven
- Learning is sacrosanct and paramount; everything else is secondary -A school where teachers are free to teach and have clarity of what is expected of them
- Where standards are upheld and learning and children are at the heart of every decision and improvement
- Where children and their views are valued and they are kept safe
- Where staff have access to high quality continued development and support

Respect

Love

Happiness

Independence

Friendliness

Politeness

Trust

Courage



Our 8 Behaviours, decided by our pupils, agreed by staff, parents & governors, drive everything we do, every day. Staff from our school have been invited to present about our wellbeing work at regional and national conferences. We shape our wellbeing work around two key pillars.

### The Daily Experience

We have worked hard over recent years to ensure that The Dell is a lovely place to learn, work and visit. We have developed a warm, conversational and approachable relationship with parents and colleagues beyond the school and we have focused relentlessly on living our 'Be Kind, Be Your Best' ethos and our Eight Behaviours every day. The result is that children love coming to The Dell, parents really like the school and staff love working here. We know this from our routine conversations with children, parents and staff (See the 'Voices' page) on our website. Fundamentally we believe that when people little and big feel happy, safe, cared for, liked and valued, they have heightened wellbeing and they learn and interact much more effectively with each other.

### Intervention

We provide a wide range of interventions for children and adults at times (be they brief or ongoing) when life and circumstances are challenging. Through our Sunshine Room provision we provide targeted, bespoke support at times of crisis and when children need an even closer eye and we work routinely with external agencies and colleagues to identify support as and when needs cannot be met solely within the school. We have also worked hard to normalise support so children do not feel stigmatised or embarrassed about seeking help to get them through challenging times.



### Equality for All

At The Dell Primary School, we are committed to working towards equality for all regardless of age, race, disability, gender, religion or belief, sexual orientation and to the creation of an inclusive culture in which every individual, regardless of ability and background is enabled to participate and is valued as a member of our school community. Therefore we promote positive approaches to difference and foster respect for people of all cultural backgrounds.

#### Purpose

1. To ensure all people connected

with the school have a right to have access to relevant and understandable information.

2. To ensure that all staff have a right to both personal and professional development as needed.
3. To ensure that all amenities and resources do not deny equal opportunities.
4. To ensure that everyone is aware of their duties and responsibilities in implementing this policy.
5. To ensure that all children have equal access to all curricular areas.
6. To ensure diversity is celebrated.

### Multicultural Education

The Headteacher and Governors have endorsed Monmouthshire County Council's 'Policy for Curriculum in Monmouthshire Schools' which recommends the preparation of pupils for life "in a multicultural, multi-ethnic, multi-lingual, multi-faith Britain; and to build on the strength of cultural diversity." There is a policy in the school on racial harassment and procedures to deal with it under the school's general discipline policy.

### School Security, Health & Safety for All

Every year, our governing body reviews and re-adopts our school policies for safeguarding and health and safety. We have clear and rigorous processes to safeguard children during their time in school and in their lives away from school. This extends to the security of the site and risks from intruders as well as routine fire evacuation drills and reviews of the indoor and outdoor environment, ensuring defects or risks are assessed and repairs are planned and undertaken.



Politeness

Friendliness

Happiness

Independence

Courage

Love

Respect

Trust

Looking for a Reception place for your child in September 2025? We have 60!



First in Wales!



**Be kind  
Be your best**

[www.dell.monmouthshire.sch.uk](http://www.dell.monmouthshire.sch.uk)



@thedellschool



## Children With Additional Learning Needs (ALN)

The school has a policy for Additional Learning Needs in line with the Additional Learning Needs & Education Tribunal (Wales) Act and the ALN Code for Wales.

Children have Additional Learning Needs when they have a learning difficulty which calls for additional educational provision to be made for them. The difficulties may be of a physical nature; connected with sight, hearing or speech; emotional or behavioural; related to aspects of language or mathematical work; or more general.

The school has a Designated Governor and a leadership role for Additional Learning Needs.

The policy and practice aim to identify and provide help for children with additional needs. Class teachers are responsible for the additional learning needs of the children in their charge.

Partnership working with all parents, particularly those whose children have additional needs is vital. We work with agencies to support children with their additional needs. For example:

- **Learning Difficulties** - Our support is bespoke to the child and may involve additional adult support and working with visiting staff.
- **Hearing Impaired** – through the Hearing Impaired Service, the school will try to organise for qualified British Sign Language teachers to assist parents' discussions with teachers.
- **Visually Impaired** – information from school can be transcribed into Braille, large print, or made available digitally.
- **English as a Second Language** – the school will try to organise for the services of a translator for school to home communication.
- **Welsh Language** – the school will try to organise help from the Welsh Language Service as required.

## Pupils with Physical Disabilities

Wherever possible, we welcome all children at The Dell. Admission of pupils with disabilities sees us working in partnership with Monmouthshire County Council, who may need to carry out a risk assessment. The school building and grounds are accessible for physically disabled children and adults, with a sloping ramp connecting the two levels of the school, and disabled toilet facilities on both levels. Access to the demountable classrooms is by way of a side path.

The school addresses the issues of disability in an empathetic, informed, inclusive environment.



## Curriculum Offer

Through the reflection process and through listening to our pupils, we aim to offer a rich and varied curriculum with opportunities within our local area and further afield. These form part of our termly 'offer' to pupils to be weaved into our curriculum through our termly learning themes.

- **Core Texts** – Our termly themes are based on 'core texts' which each year group work on as the core of their learning in literacy. These texts are chosen for their level of challenge and provide a balance of genres and writing styles across the school.
- **Authentic, Real Life and Outdoor Learning Experiences** – throughout the learning theme, it is vital that pupils experience authentic learning activities and, wherever possible, we use the outdoors to develop those experiences.
- **Creative and Drama Experiences** – from listening to our learners, it was clear that the pupils wanted more creative and drama experiences within their curriculum and so learning themes now incorporate these on a regular basis.
- **Learning Goal** – having a goal aligns with our belief that authentic learning engages and our termly goals allow pupils to work towards that termly goal.
- **Trips and Visits** – learning is always enhanced by visits, whether they be in our local community or further afield.
- **Community Links and Visits** – our school is at the heart of our community and it is vitally important that learning reaches out to our community. We regularly visit parts of our locality and we regularly welcome visitors from near and far into the school to share information and experiences with pupils.
- **STEM Project** – problem solving, collaboration and creativity is developed through our termly STEM project, linked to our learning themes.
- **E-safety Focus** – the cross-curricular themes of the Digital Competency Framework are supported through our focus on e-safety and understanding how to be good, safe digital citizens.
- **Areas of Improvement** – every term, we celebrate successes and also cast a critical eye over the previous term and set improvements and how to get it better.



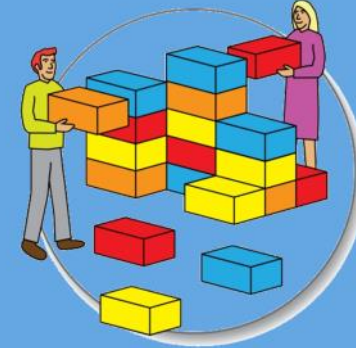


# All our children will become...



## **Ambitious, Capable Learners**

...ready to learn throughout their lives



## **Enterprising, Creative Contributors**

...ready to play a full part in life and the world



## **Healthy, Confident Individuals**

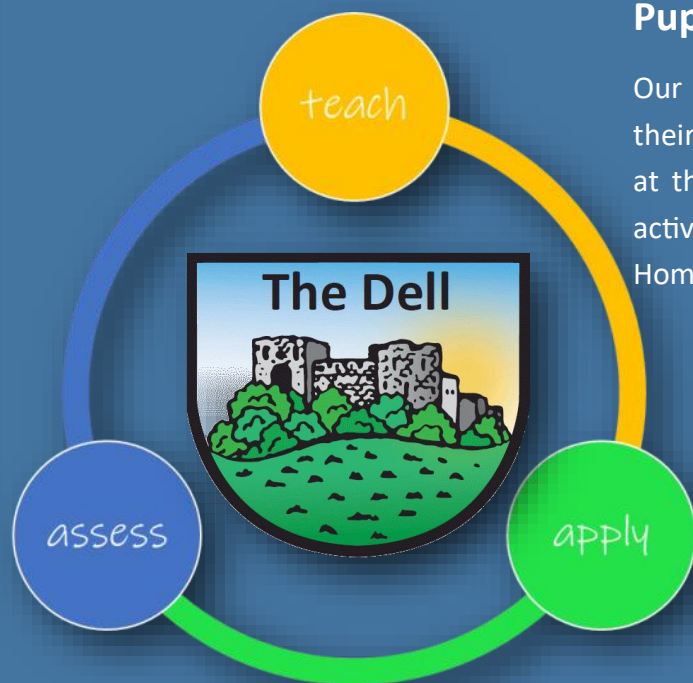
...ready to lead fulfilling lives as valued members of society



## **Ethical, Informed Citizens**

...ready to be citizens of Wales and the world





## Pupil Voice

Our pupils play a central part in the development of their learning. They contribute to Pupil Voice activities at the beginning of each learning theme and these activities feed into areas such as My Time and the Home Learning Menus.



## My Time

The main focus of learning at The Dell is the ability for the pupils to be able to apply skills in a range of different contexts. Throughout the school, pupils revisit key skills independently through the afternoon 'My Time' sessions. Pupils assess themselves and their peers through 'Steps to Success' and reflect upon their learning through 'Reflection Sentences'.

My Time ensures that all of the Areas of Learning & Experience (AoLE) are being taught, applied and assessed and that pupils develop their independence and resilience.

My Time	
Can I gather and summarise key information?	
<input type="checkbox"/> FT	Choose an astronaut that you would like to learn more about and highlight the key information. Think about their early life, career and retirement. Use this information to write create a mind map full of information about your chosen astronaut.
<input type="checkbox"/> I	
★	<input type="checkbox"/> I can independently gather key information about an astronaut <input type="checkbox"/> I can summarise key points in a mind map <input type="checkbox"/> I can use a variety of subheadings to separate information
★	<input type="checkbox"/> I can gather important information about an astronaut <input type="checkbox"/> I can put the information I have found into a mind map <input type="checkbox"/> I can begin to use subheadings to separate information



## The Cost of The School Day

We have always been mindful of the affordability of sending children to school beyond basic uniform costs and we are fully committed to signposting and raising awareness of sources of financial support where available. It's not straightforward to calculate a single cost for sending your child to school; every child and household will have unique requirements according to the additional activities they undertake (such as Breakfast Club, after school club, concerts etc).

Our work in this area focuses on two aspects of affordability; the financial cost of the school day and the emotional cost of the school day

### Financial Cost

We have two uniform suppliers who supply our school uniform with embroidered logo. Contact details can be found on the School Uniform page of our website. One supplier is online, one is local. We also have our PTA Swap Shop which is a great way for all parents to 'recycle' their child's uniform when they grow out of it and obtain new items. We ask for a £1 donation per item but if budgets are tight, you can pay what you can, when you can. The Swap Shop is open from 8am-6pm each school day and is located in the car park by the bus bay. It contains many other items such as school shoes, trainers, coats and sometimes musical instruments and sporting equipment; all designed to allow your child to fit in and to participate in both in and out of school activities and clubs.

We review the trips that we organise and their cost against learning merit, keeping them to a minimum and often using the local area for learning. We also limit the number of times each year we (ask parents to) support various charities and fundraisers. We want to engender a sense of care and compassion but we appreciate that this might put a pressure on parents. If you are struggling with meeting the cost of school or trips, please contact Mr King in confidence; we will do what we can to provide support and assistance and, where appropriate, direct you to sources of additional support.

### Emotional Cost

All staff are aware of activities that they organise and that take place in school which can make children feel they are left out or different. We minimise dressing up days because we know some children, often the same children, are not able to take part on the grounds of cost or domestic constraints. Working with the children, we have a good understanding of things we do in school which can make children feel they don't fit in and we try to design these out and where we can't, to mitigate the effects perhaps with spare clothing or equipment.





## Physical Education & School Sport

In line with national guidelines we aim to provide two PE sessions per week. Sometimes this will be more but occasionally (e.g. at busy times of the year such as Christmas) pressures of space, time and weather conditions might temporarily limit the PE sessions we are able to offer.

We try to give as many children as possible the opportunity to represent the school in sport at some time during their time with us. Everyone who represented The Dell in sport is a Dell Dragon!

Games and Physical Education are compulsory for all children except those excused on health grounds, supported by a medical note from your doctor. Children suffering from minor ailments may be excused when requested by parents in writing.

### Swimming

All pupils in Years 3-6 undertake swimming lessons. At the end of Year 6, schools now have to report standards attained by every pupil. As with English, Maths, Science and Welsh, if we're measuring attainment, we'd like as many pupils as possible to achieve above national expectations.

A swimming costume, towel and waterproof bag is required. Children walk to and from Chepstow Leisure Centre.

There are more details about swimming and attainment levels on our website at [www.dell.monmouthshire.sch.uk](http://www.dell.monmouthshire.sch.uk)







## Breakfast Club

We offer a free breakfast for pupils each school day. Funded by the Welsh Government, Breakfast Club is intended specifically to ensure that every child can start their learning day with a good breakfast inside them. On that basis we are unable to accept children who have already eaten breakfast at home and we will insist that children eat breakfast in school. However Breakfast Club is not means tested and all children are welcome to attend breakfast club for breakfast.

FREE Breakfast is available to all pupils from 8.30am each morning. Pupils may also attend between 8-8.30am for a charge of £2 per day.

If you want your child to attend the childcare session for all or any part of 8-8.30am you must register them AND pay for the session via Parentpay by midnight on the previous day. Children not on this register will not be admitted and will be kept safe in a covered area within the internal perimeter fence. We do not accept late bookings or cash on the door. Please ensure that your child is never on the school site unsupervised.

We are unable to accept children into Breakfast Club after 8.40am and children are not able to enter the building before 8am. You can download a registration form on our website or from the school office. Once registered, there's no need to pre-book, children can attend as and when required.

## After School Child Care

An after school club is run each school day from 3.30pm. This activity is based on the school site and is open only to pupils registered at The Dell. The club is a commercial letting agreement between the school and Mathern Day Nursery (since 1995).

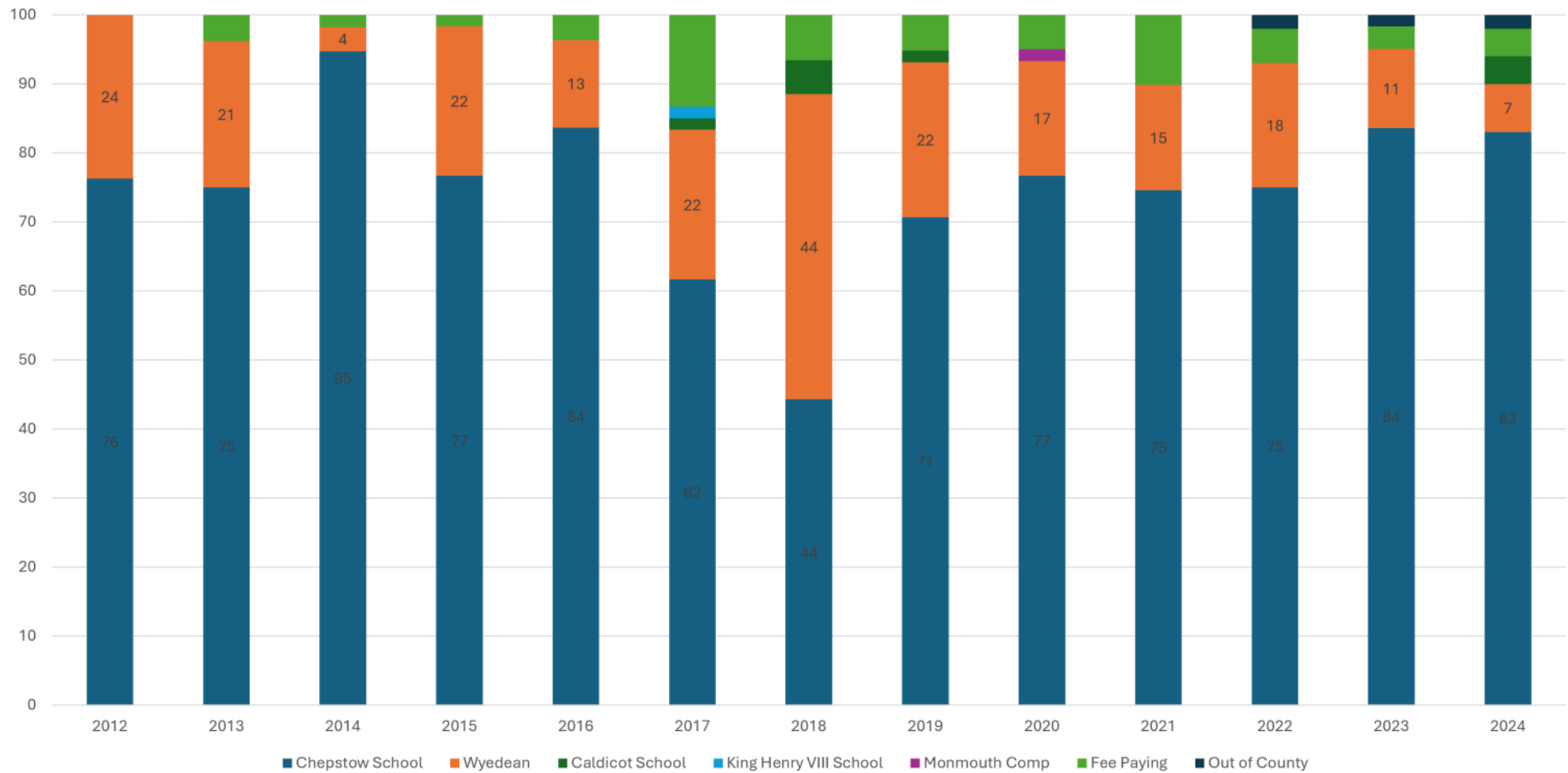
Further details and bookings can be made by contacting Mathern Day Nursery (01291 622007) between 8.00am-6.00pm, Monday – Friday)

## Holiday Time Activities

A sports camp is run on most days in school holidays and half terms. This activity is based on the school site and is open to children from the local area. The club is a commercial letting agreement between the school and Prostars Forest Sports Education. This activity is separate to the regular physical education and sport teaching which Prostars provide during the school day and has no connection to the school other than operating on the school premises. Have a look through our photo galleries by clicking on the 'We're Adventurous' button on the homepage of our website [www.dell.monmouthshire.sch.uk](http://www.dell.monmouthshire.sch.uk).



## Year 6 Destination Secondary Schools (%)



Most of our children move on to Chepstow School at the end of Year 6. Chepstow School is a secondary setting in Monmouthshire and we work closely with colleagues to ensure a smooth transition for all and an enhanced transition experience for a few. Wyedean is another secondary school in the town of Chepstow however it is in Gloucestershire in England. While we work with Wyedean colleagues to share important and statutory information about children moving there and always accommodate visits and transition days, we do not have the close working arrangements as schools across Wales are required to have with their cluster secondary school. Similarly, being in England, the school has quite different curriculum and assessment arrangements than those in Wales.



Our Home School Agreement clarifies the expectations and responsibilities of the school, parents and pupils during their time here at The Dell. We see this Agreement as securing the foundations for a sound learning partnership between home & school from day 1. Children will never come close to reaching their potential if home and school do not share the same standards and approaches or communicate effectively.

### Pupil's Responsibilities

Pupils will:

- try their best to do their best at all times and in all lessons;
- treat other children in the way they want other children to treat them;
- try to tell an adult in school if they have a problem or worry, even if it is embarrassing or they are nervous about it;
- respect other people's property and feelings;
- look after and care about the school building and grounds as well as any equipment they use to play and learn;
- take part in making class rules and make sure they keep to them;
- be polite to everyone they learn with and work with in school;
- keep an eye out for children who need a friend and be kind to others;
- try to make everyone around them (including themselves) proud of what they do and achieve;
- act sensibly when they are representing the school on visits and trips;
- never hit, kick, pinch, punch, bite or hurt anyone.
- be kind, be their best and demonstrate our Eight Behaviours each day.

### Parental Responsibilities

Parents will:

- ensure their child arrives at school on time, physically, mentally & emotionally ready for the day ahead;
- support their child to develop and understand (at home) what they have been learning in school;
- support their child's progress in reading by listening to him/her read & reading to him/her on a regular basis;
- inform the school about any medical or health issues which may affect their child's attendance, behaviour or happiness in school;
- make sure that their child understands and abides by the school's rules at all times;
- endeavour to attend all parents' consultation evening to get to know more about their child's progress in school;
- support the school's uniform policy and ensure that their child has correct and appropriate clothing;
- help their child to understand that learning is something that happens everywhere and at any time, not just in school;
- make sure that their child understands that physical aggression is never acceptable in school and will be dealt with quickly and decisively.
  - be kind, be their best and demonstrate our Eight Behaviours each day in all communication with the school.

### School's Responsibilities

We will:

- be open and honest about your child's education, aiming to keep you informed about his/her progress and any concerns we have at an early stage;
- treat your child fairly in every situation and context;
- employ a range of methods to engage your child and help his/her to learn to the best of their ability;
- provide a vibrant, stimulating environment in which your child can learn;
- design and teach a curriculum which is interesting, relevant, and enjoyable and meets all legal requirements laid down by the Welsh Government;
- be open and welcoming at all times and offer you opportunities to become integral partners in the life of the school;
- teach your child the skills he/she needs to become literate and numerate as well as skilled in all curriculum subject areas;
- teach your child the skills he/she needs to resolve issues and conflicts and to live, learn and work with others now and for the rest of his/her lives;
- maintain an ethos whereby parents feel comfortable in raising concerns with their child's class teacher or other members of staff as appropriate;
- provide on-line resources to help your child learn out of school hours.
- be kind, be our best & demonstrate our 8 Behaviours each day in all our communications with you.





Each year, children have the opportunity to perform to an audience in a concert or production. Parts are allocated by staff who use their knowledge of each child and aim to strike a balance between those showing a skills or talent and those who show potential. Staff do not consult previous teachers about previous roles and we do not change, swap or negotiate parts once they have been allocated. If parents tell us their child is upset by the part they have been given, staff will be happy to reallocate the part to another child.



## Charging & Remission Policy

In all the activities we plan including fundraising activities, we always try to focus on the cost of the school day for parents. The school has a clear policy on any charges it makes for activities and this is laid out in detail in our Charging & Remission Policy which is available on the 24/7 Office page of our website [www.dell.monmouthshire.sch.uk](http://www.dell.monmouthshire.sch.uk).

## Making a Complaint

We really hope that parents feel they can approach the school to discuss any concerns or disagreements they have as this is the quickest and easiest way to resolve issues. However if having tried this first step, if they still feel in disagreement, they can formalise their concern through our Complaint Policy which is available on the 24/7 Office page of our website at [www.dell.monmouthshire.sch.uk](http://www.dell.monmouthshire.sch.uk) and on request. We have only had one formal complaint since 2012 however if a complaint is made, we always address it through this policy.

## Term Dates, Session Times

Term	Start	Half Term	Term End
Autumn	2 Sept 24	28 Oct - 1 Nov 24	20 Dec 24
Spring	6 Jan 25	24 - 28 Feb 25	11 Apr 25
Summer	28 Apr 25	26 - 30 May 25	21 Jul 25

School Begins at 9am each morning for all pupils (Doors open at 8.50am)  
School ends at 3.30pm each afternoon for all pupils. Lunch is from 12-1pm

## Relationships & Sexuality Education

RSE is mandatory from ages 3-16 in the new curriculum for Wales in both primary and secondary schools. But the RSE code for teachers ensures lessons must be “developmentally appropriate”. Under the new curriculum, parents will no longer be able to remove their children from sex education classes. More details are on our RSE policy on the ‘24/7 Office’ page of our school website [www.dell.monmouthshire.sch.uk](http://www.dell.monmouthshire.sch.uk).

## Religious Education & Collective Worship

The Education Reform Act 1988 and the Welsh Office Circular 10/94 set out the legal requirements for collective worship in schools in Wales.

- schools must provide collective worship daily for all registered pupils
- most acts of collective worship in each term should be wholly or mainly of a

broadly Christian character; this means that they should reflect the broad traditions of Christian belief without being distinctive of any particular Christian denomination

- collective worship can take place at any time during the school day
- collective worship can be provided to pupils in any sized group, for example, as a class, a year group, a phase group or a whole-school community
- collective worship should take account of the family backgrounds, ages and aptitudes of the pupils involved. A parent can request that their child is excused from collective worship and schools must agree to such requests.

## Use of Welsh Language

The language of the school is English. Welsh is taught as a second language.

## Admissions

All admission to our school (& all maintained, non-aided faith schools in Monmouthshire) are administered by Monmouthshire County Council’s School Access Team. Find out about applying for a place at The Dell and the admissions process on the 24/7 Office page of our website [www.dell.monmouthshire.sch.uk](http://www.dell.monmouthshire.sch.uk).

## Attendance

The United Nations Article 28 states, ‘Every child has the right to have a primary education’. Thank you for supporting the school in exceeding our attendance target this year and helping us ensure this basic human right for every child. We’re proud of our high attendance levels at The Dell which have been above 96% since 2012. Please help us maintain these high levels and maximise learning. Full details of our Attendance Policy can be found on the 24/7 Office page of our website [www.dell.monmouthshire.sch.uk](http://www.dell.monmouthshire.sch.uk).

## Invitations and Information

We can not provide class list for parents or share any information about any other child in the school. Sometimes we are asked for contact details for another child or parent and we are unable to support these requests.

The school has a policy of not distributing party invitations, cakes or gifts that children may bring in to school.

*The Dell Primary School*

*Welsh Street, Chepstow, Monmouthshire, Wales, NP16 5UQ*

*01291 635641*

*[thedellprimary@monmouthshire.gov.uk](mailto:thedellprimary@monmouthshire.gov.uk)*

*Chair Of Governing Body: Mr Steve Curran*